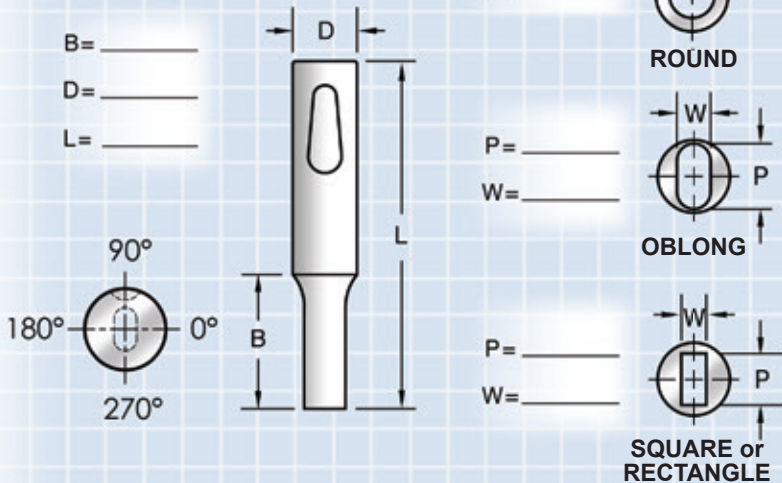




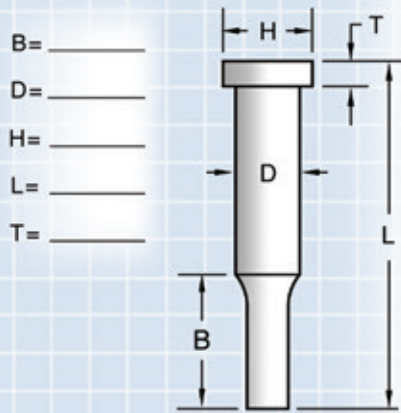
BALL LOCK

- Light Duty
- Heavy Duty
- Ejector



SHOULDER PUNCH

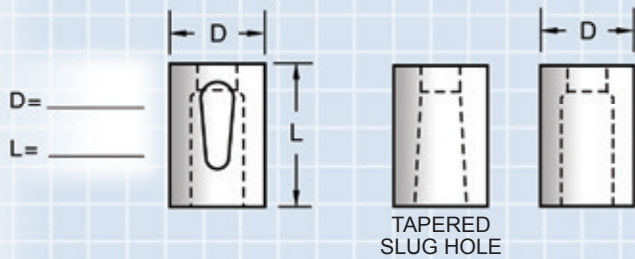
- Ejector
- Standard
- Diamond



PRESS FIT BUTTON

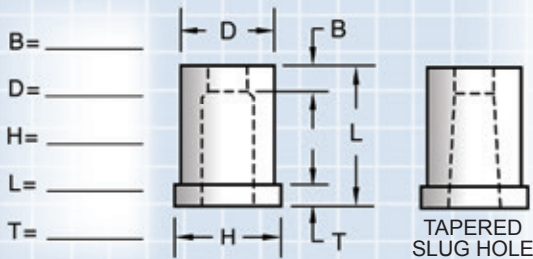
- Standard
- Diamond

BALL LOCK



SHOULDER BUTTON

- Standard
- Diamond



OPTIONS

See page 32-33 for locating flats and grooves.
See page 37-38 for classified shapes.

